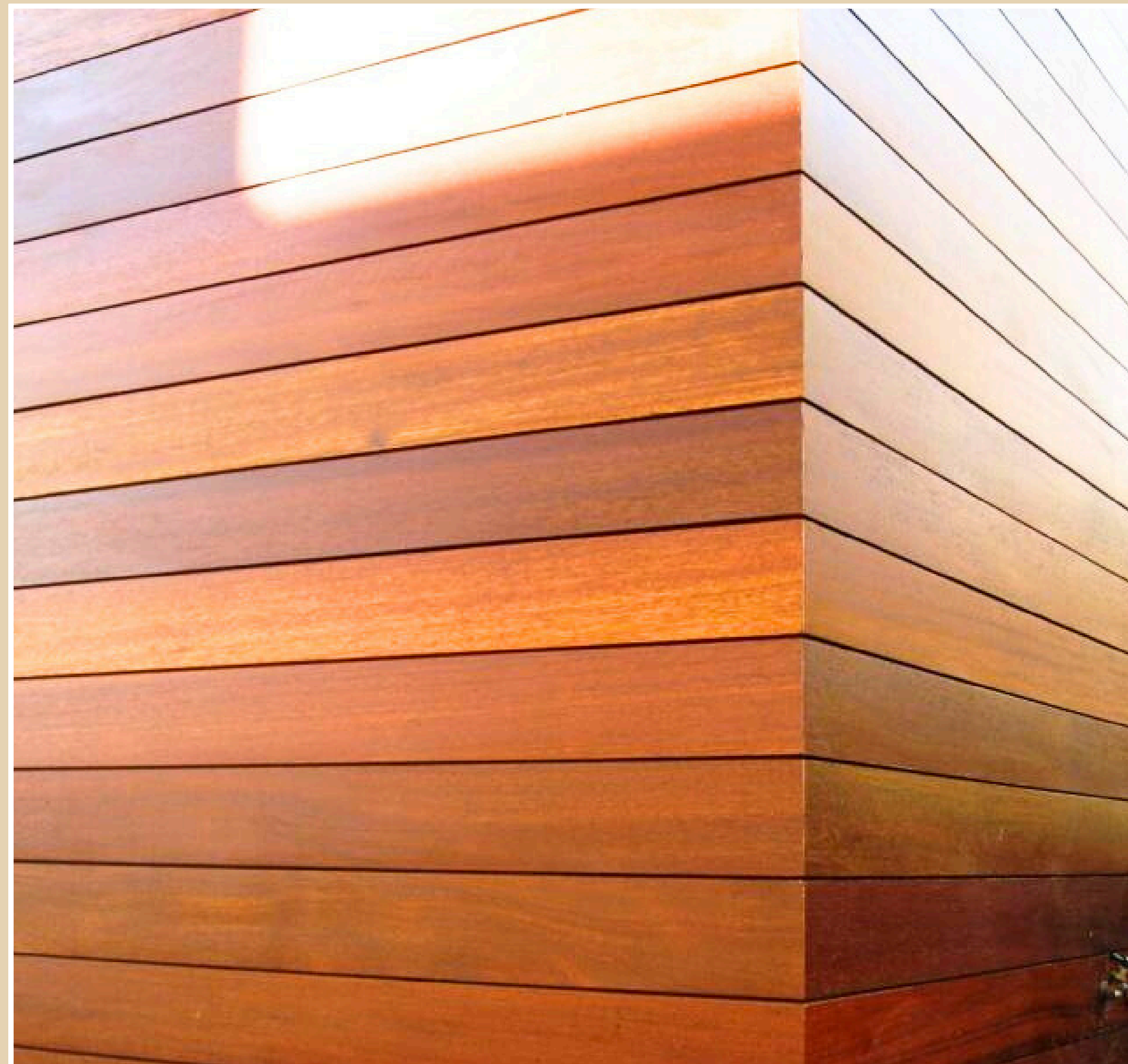


BRAZILIAN TEAK VS IPE WOOD



BRAZILIAN TEAK

Common Name(s): Brazilian Teak

Color: Yellow Brown, Teak Brazilian's stunning golden, brown, and red tones.

Shrinkage: Radial: 4.20%, Tangential: 9.50%

Average Dried Weight: 50-56 lbs/ft³ (800-950 kg/m³)

Brazilian Teak: RT/RR Ratio- 2.3

Janka Hardness: 3,478 (pounds)

Size: 20 mm thick, 90-140mm wide.

Modulus of Rupture (MOR): 24,950 (psi)

Modulus of Elasticity (MOE): 2,900 (1000 psi)

Strength: extremely strong

Durability: Highly Durable

Density ranging from 0.85 to 1.05 g/cm³

Moisture Resistance: Exhibits excellent resistance to moisture, decay, and insects, making it suitable for outdoor applications.

Fire Resistance: Also classified as a fire-resistant material, providing excellent fire performance in outdoor applications.





IPE WOOD

Color: reddish brown, yellowish olive, dark blackish brown, sometimes with contrasting darker brown/black stripes.

Shrinkage: Radial: 6.6%, Tangential: 8.0%

Average Dried Weight: 50-56 lbs/ft³ (800-900 kg/m³)

Ipe Volumetric: 13.2%, T/R Ratio: 1.2

Janka Hardness: 3,680 lbs (16,370 N)

Size: 20 mm thick, 90-140mm wide.

Modulus of Rupture: 26,190 lb²/in (180.6 MPa)

Elastic Modulus: 3,167 lb²/in (21.84 GPa)

Strength: extremely strong

Durability: Highly Durable

Density ranging from 0.85 to 1.05 g/cm³

Moisture Resistance: Naturally resistant to moisture, rot, decay, and insect infestation due to its dense cell structure and natural oils.

Fire Resistance: Classified as Class A fire-resistant material, offering superior fire resistance compared to many other wood species.

BRAZILIAN TEAK -

Color Variation: Brazilian Teak boasts a broader range of color variation compared to Ipe. It can feature hues ranging from golden brown to reddish-brown, with occasional streaks of darker brown or black.

Contrast: Brazilian Teak often exhibits more pronounced color contrasts within and between boards, with variations in grain pattern and color intensity adding visual interest.

IPE WOOD -

Color Variation: Ipe typically exhibits a rich, dark brown color with subtle variations in tone. It often features prominent streaks of darker brown, reddish-brown, or blackish hues.

Consistency: While Ipe generally showcases uniform coloration within individual boards, slight variations in color and grain pattern can occur due to natural wood characteristics.

In summary, while both **Brazilian Teak and Ipe** are durable and resistant to the elements, they cater to different aesthetic preferences and functional needs. **Brazilian Teak offers a uniform appearance with 10-20% color variation**, ideal for those preferring consistency. In contrast, **Ipe features a striking look with 40-50% color variation** and slightly superior hardness. Both kinds of wood are durable and resistant to elements, making them excellent choices for flooring and decking.